

Corrosion-resistant polycarbonate luminaires

IP65 luminaires with injection moulded polycarbonate body and frosted prismatic polycarbonate cover, both fire-retardant.

Applications: cold stores, printing works, water treatment plants and pump rooms, industrial process areas, shower rooms and toilet blocks.

- Smooth easy-clean lines
- Snug-fit polycarbonate cover clips (stainless steel option)
- Fast installation via external stainless-steel brackets preserves IP rating
- Factory fitted 4-core through wiring option (alternative configurations to special order)
- Suitable for external applications if mounted under a canopy
- Complies with M.O.D. JSP482 Chapter 8 Document for 'Category C' areas
- SmartScan wireless technology removes the need for control cabling. Ideal for retro-fit

Notes: For ambient temperatures below the stated minimum contact the Thorlux Technical department



Up to IP65

Up to 132.4 LL/CW

SMARTSCAN

Specification

| | | | |
|-------------------------------|---------|-----------|------------|
| Mounting | Surface | IP rating | Up to IP65 |
| Max presence detection height | 8 m | | |

Lighting

| | | | |
|----------|-------------------------|--------------|---------------------|
| Optic | Frosted prismatic cover | Lumen output | 3,700 lm - 9,535 lm |
| Efficacy | Up to 132.4 LL/CW | | |

Emergency data

| | | | |
|------------------------|-----------------|-----------------------|-----------------------------|
| Emergency lumen output | 435 lm - 640 lm | Emergency type | Maintained |
| Emergency duration | 3 hours | Battery specification | Nickel Metal Hydride (NiMH) |

Power

| | | | |
|-----------|-------------|---------------|-------------|
| LED power | 23 W - 60 W | Circuit power | 31 W - 72 W |
|-----------|-------------|---------------|-------------|

LED characteristics

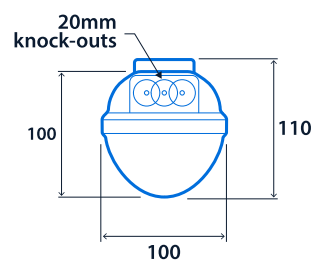
| | | | |
|--------------------|-----------------|--------------------|--------|
| CRI | 80+ | Colour temperature | 4000 K |
| Rated life (hours) | 100 K - L70/B10 | | |

Compliance

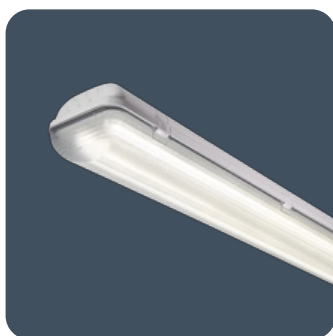
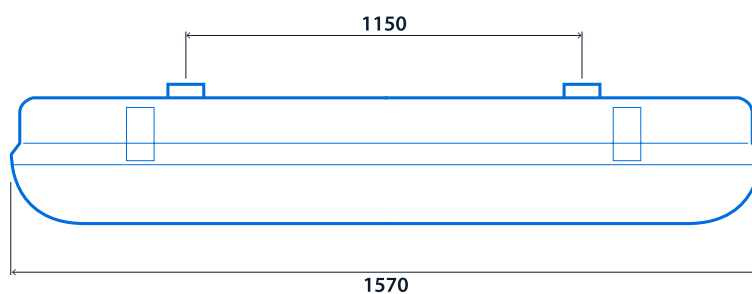
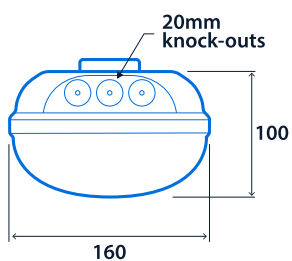
| | | | |
|---------------------------|--------------|----------------|---|
| UKCA | Yes | CE | Yes |
| C-Tick (Aus) | Yes | D Mark | Yes |
| Food production standards | HACCP IFS | MOD compliance | JSP482 Chapter 8 Document for 'Category C' areas |

Dimensions

Narrow Body



Wide Body





Click or scan here
View Thoroproof variants
using our online filtering tool



Information is correct as of 31 Jan 2025, however must not be interpreted as a guarantee of individual product performance and/or characteristics. We reserve the right to alter specifications and designs without prior notice.