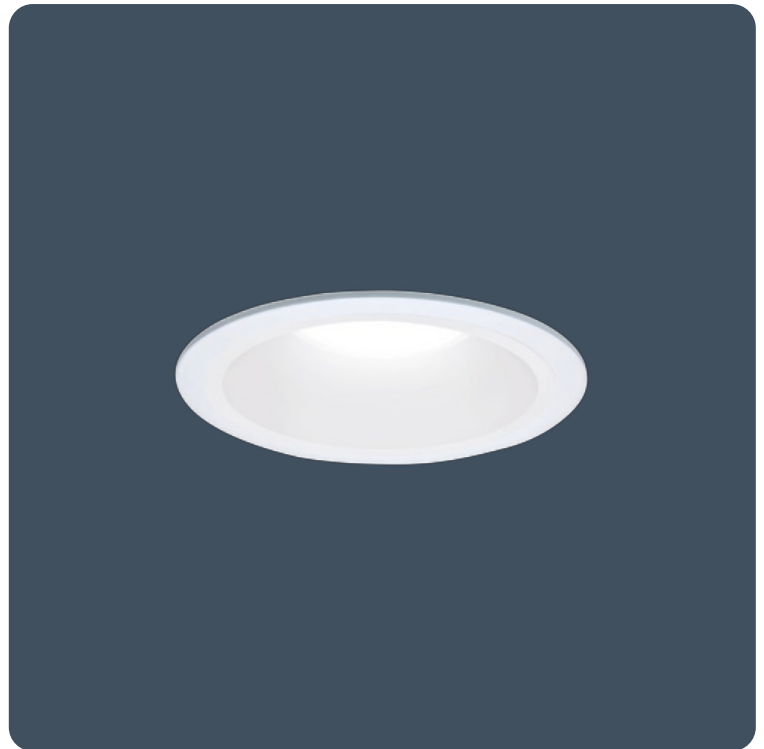


Non-ferrous circular downlight for use in MRI rooms

Non-ferrous recessed downlighter luminaires for use in magnetic resonance imaging (MRI) rooms. Remote gear box and non-ferrous downlighter head designed specifically to meet the requirements of MRI rooms. Non-maintained emergency version also available.

Applications: MRI rooms.

- Non-ferrous construction, designed for use in MRI rooms
- Two output circuits per DALI gearbox where each circuit can power a minimum of 5 downlighter heads, up to a maximum of 8
- Downlighter wiring configured for low EMI when used with EMI filters (supplied by others)
- Emergency status indicator LED can be remotely mounted outside of the room
- DALI dimmable control gear as standard. Can be used with push to make retractive switch for dimming and switching



IP20

133.3 LL/CW

Specification

IP rating	IP20
-----------	------

Lighting

Lumen output	1,600 lm	Efficacy	133.3 LL/CW
--------------	----------	----------	-------------

Emergency data

Emergency lumen output	800 lm	Emergency type	Non-maintained
Emergency duration	3 hours	Battery specification	Nickel Metal Hydride (NiMH)

Power

LED power	6 W - 11 W	Circuit power	12 W
-----------	------------	---------------	------

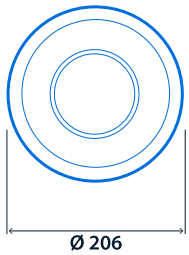
LED characteristics

CRI	80+	Colour temperature	4000 K
Rated life (hours)	100 K - L80/B10		

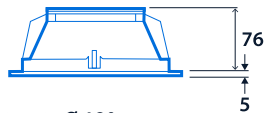
Compliance

UKCA	Yes	CE	Yes
C-Tick (Aus)	Yes		

Dimensions



Ø 206

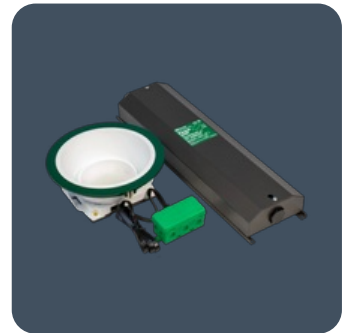
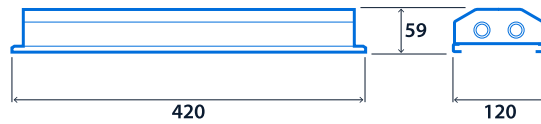


Cut-out - Ø 180
Minimum void depth - 110

LED Downlighter Power Unit



Emergency LED Downlighter Power Unit



Click or scan here
View G3 MRI variants using
our online filtering tool



Information is correct as of 05 Feb 2025, however must not be interpreted as a guarantee of individual product performance and/or characteristics. We reserve the right to alter specifications and designs without prior notice.