

## Vandal-resistant sealed luminaires

Vandal-resistant sealed luminaires complying with M.O.D. JSP482 document for 'Category C' areas and IK11 - high impact strength, satin polycarbonate front cover. Infills available for continuous mounting.

Applications: underpass lighting, subways.

- High impact strength diffuser
- Continuous mounting available using infills
- Luminaires supplied with corner mount kit
- Complies with M.O.D. JSP482 Document for 'Category C' areas



IP66
IK11
Up to 125.9 LL/CW
LUXGUARD

### Specification

Mounting	Surface	IP rating	IP66
Impact rating	IK11	Nominal size	1600 mm

### Lighting

Optic	Satin diffuser	Lumen output	4,030 lm - 7,995 lm
Efficacy	Up to 125.9 LL/CW		

### Power

LED power	27 W - 60 W	Circuit power	32 W - 69 W
-----------	-------------	---------------	-------------

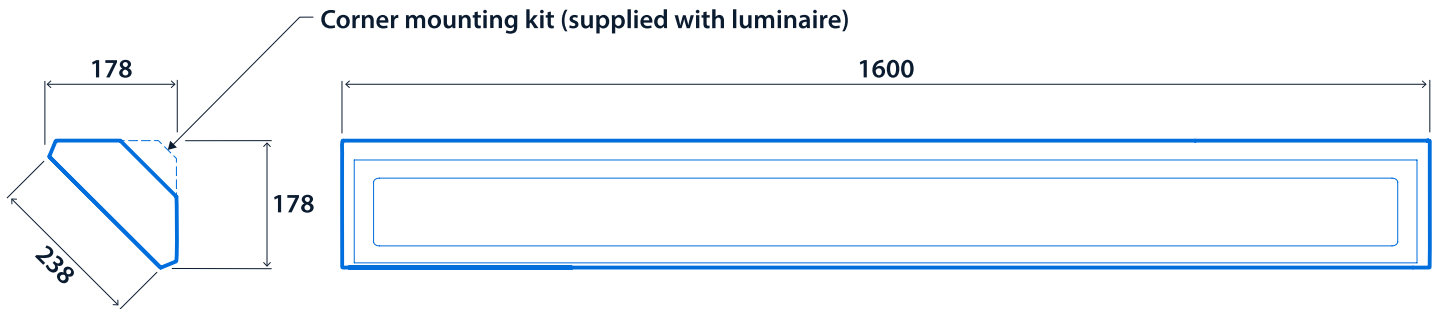
### LED characteristics

CRI	80+	Colour temperature	4000 K
Rated life (hours)	100 K - L80/B10		

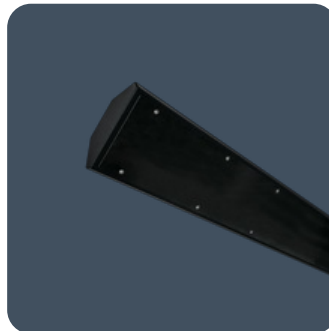
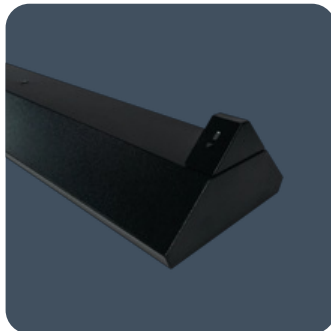
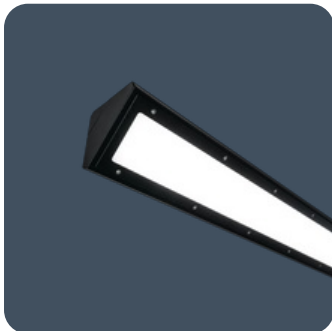
## Compliance

UKCA	Yes	CE	Yes
C-Tick (Aus)	Yes	MOD compliance	JSP482 Chapter 8 Document for 'Category C' areas

## Dimensions



**NOTE: Supply entries and fixing points to be drilled on site. IP66 integrity must be maintained**



**Click or scan here**  
View Vandalux variants using  
our online filtering tool



Information is correct as of 12 Mar 2025, however must not be interpreted as a guarantee of individual product performance and/or characteristics. We reserve the right to alter specifications and designs without prior notice.