

## Vandal-resistant luminaires

Luminaires suitable for internal or external use. Strong high-pressure die-cast aluminium body with flame-retardant polycarbonate cover. Photocell and maintained emergency versions available.

Applications: security areas, precincts, subways, passages and corridors.

- Tamper-resistant cover screws as standard
- Optional photocell control
- Optional bezel trim for semi-recessed mounting
- Complies with M.O.D. JSP482 Chapter 8 Document for 'Category C' areas
- Microwave presence detector option with stand-by light level feature
- SmartScan wireless technology removes the need for control cabling. Ideal for retro-fit

Notes: Photocell options are not suitable for semi-recessed or cornice mounting



IP65

IK11

Up to 125.4 LL/CW

SMARTSCAN

LUXGUARD

## Specification

Mounting	Surface	IP rating	IP65
Impact rating	IK11	Max presence detection height	2.4 m

## Lighting

Optic	Low profile satin cover Satin cover	Lumen output	1,645 lm - 2,395 lm
Efficacy	Up to 125.4 LL/CW		

## Emergency data

Emergency lumen output	340 lm - 380 lm	Emergency type	Maintained
Emergency duration	3 hours	Battery specification	Lithium Iron Phosphate (LiFePO4) Nickel Metal Hydride (NiMH)

## Power

LED power	11 W - 16 W	Circuit power	14 W - 20 W
-----------	-------------	---------------	-------------

## LED characteristics

CRI	80+	Colour temperature	4000 K
Rated life (hours)	100 K - L80/B10		

## Compliance

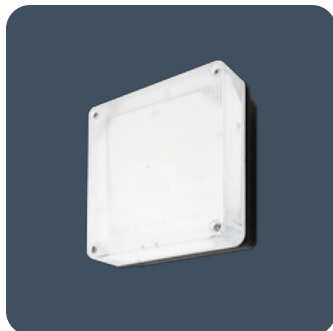
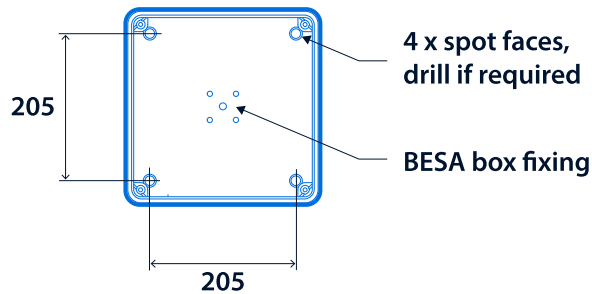
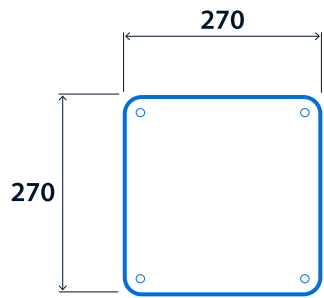
UKCA	Yes	CE	Yes
C-Tick (Aus)	Yes	MOD compliance	JSP482 Chapter 8 Document for 'Category C' areas

## Dimensions

Satin cover



Low profile satin cover





**Click or scan here**  
View Prismalette variants  
using our online filtering tool



Information is correct as of 12 Mar 2025, however must not be interpreted as a guarantee of individual product performance and/or characteristics. We reserve the right to alter specifications and designs without prior notice.