

# High Dependency Linear

## Recessed luminaires for high dependency/intensive care ward areas

Recessed luminaires with steel body and aluminium frame. Asymmetrical distribution to direct light towards the bed. Ultra low glare V-blade louvre set behind a clear polycarbonate cover.

Applications: high dependency / intensive care hospital wards.

- Asymmetrical distribution directs light towards bed
- Ultra low glare V-blade louvre set behind a clear polycarbonate cover
- Snap fix screw-less frame
- Supplied with side arm suspension kit
- Fits 24mm exposed T-bar ceilings (other ceiling type options available to special order)
- ColourControl versions available to special order

Notes: CRI 90 and ColourControl versions available to special order



IP54 (IP20 above ceiling)

86.9 LL/CW

### Specification

Mounting	Recessed	IP rating	IP54 (IP20 above ceiling)
Nominal size	1200 x 150 mm		

### Lighting

Optic	V-blade louvre	Lumen output	3,735 lm
Efficacy	86.9 LL/CW		

### Power

LED power	38 W	Circuit power	43 W
-----------	------	---------------	------

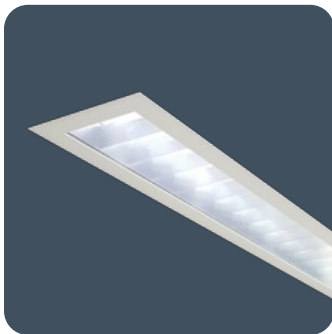
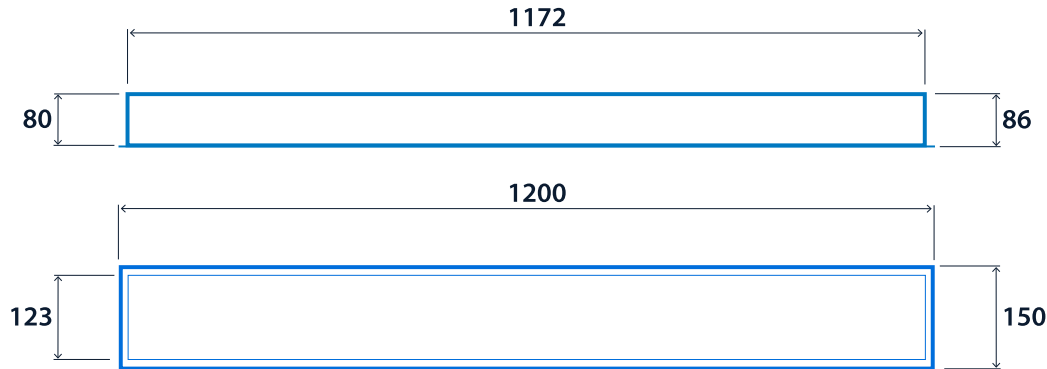
### LED characteristics

CRI	80+	Colour temperature	4000 K
Rated life (hours)	70 K - L70/B10		

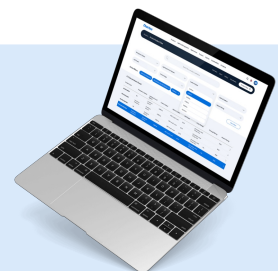
## Compliance

UKCA	Yes	CE	Yes
C-Tick (Aus)	Yes	Thermoplastic rating	TP(a)

## Dimensions



**Click or scan here**  
View High Dependency Linear  
variants using our online  
filtering tool



Information is correct as of 12 Mar 2025, however must not be interpreted as a guarantee of individual product performance and/or characteristics. We reserve the right to alter specifications and designs without prior notice.