

## IP66 circular luminaires

Circular wall mounted aluminium body luminaires with a high efficiency satin polycarbonate cover and a choice of four cover frame styles. Maintained emergency versions available.

Applications: external pathway highlighting for schools, hospitals, retail, and other commercial environments. Anti-ligature versions available.

- Strong high-pressure die-cast LM2 aluminium body and cover frame
- High efficiency fire-retardant satin polycarbonate diffuser
- Complies with M.O.D. JSP482 Chapter 8 Document for 'Category C' areas
- Photocell option
- Microwave presence detection option with stand-by light level feature
- SmartScan wireless technology removes the need for control cabling. Ideal for retro-fit



IP66
IK10
Up to 106.4 LL/CW
SMARTSCAN
LUXGUARD

### Specification

Mounting	Surface	IP rating	IP66
Impact rating	IK10	Max presence detection height	2.4 m

### Lighting

Optic	Satin diffuser	Lumen output	855 lm - 2,070 lm
Efficacy	Up to 106.4 LL/CW		

### Emergency data

Emergency lumen output	245 lm - 290 lm	Emergency type	Maintained
Emergency duration	3 hours	Battery specification	Nickel Metal Hydride (NiMH)

### Power

LED power	11 W - 16 W	Circuit power	14 W - 20 W
-----------	-------------	---------------	-------------

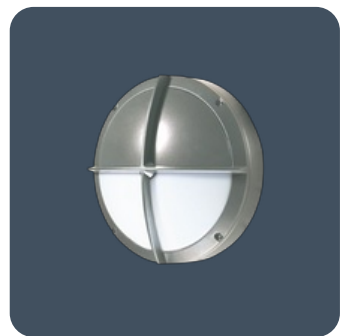
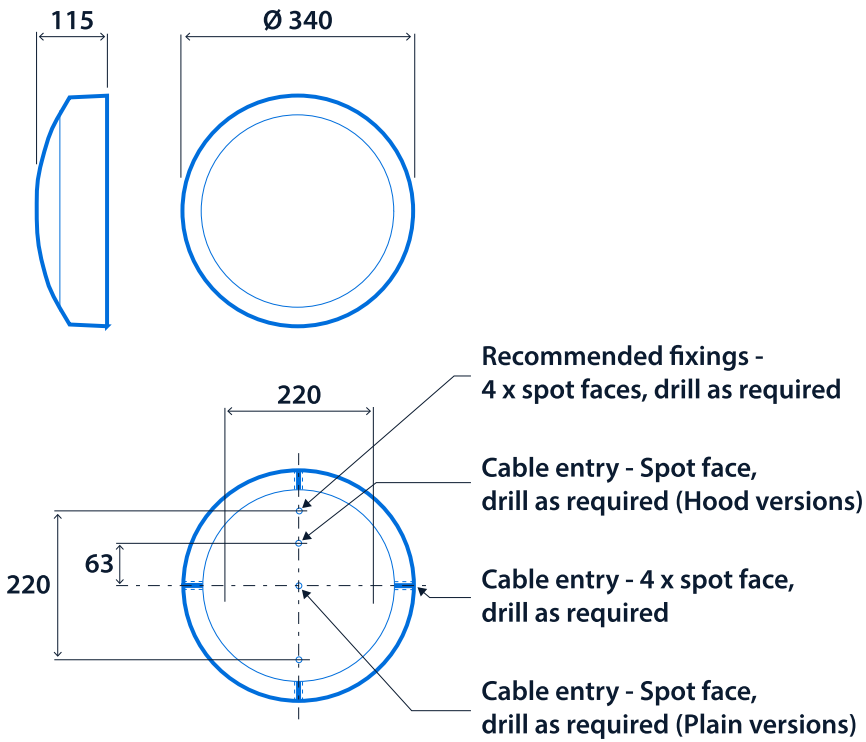
## LED characteristics

CRI	80+	Colour temperature	4000 K
Rated life (hours)	100 K - L80/B10		

## Compliance

UKCA	Yes	CE	Yes
C-Tick (Aus)	Yes	MOD compliance	JSP482 Chapter 8 Document for 'Category C' areas

## Dimensions





## Click or scan here

View Cobalt variants using  
our online filtering tool



Information is correct as of 12 Mar 2025, however must not be interpreted as a guarantee of individual product performance and/or characteristics. We reserve the right to alter specifications and designs without prior notice.